



## Establishing an E-Scooter and Bicycle Pilot Program

CEAC/LCC PWOI Panel Session

April 4, 2019

Los Angeles  
County

---

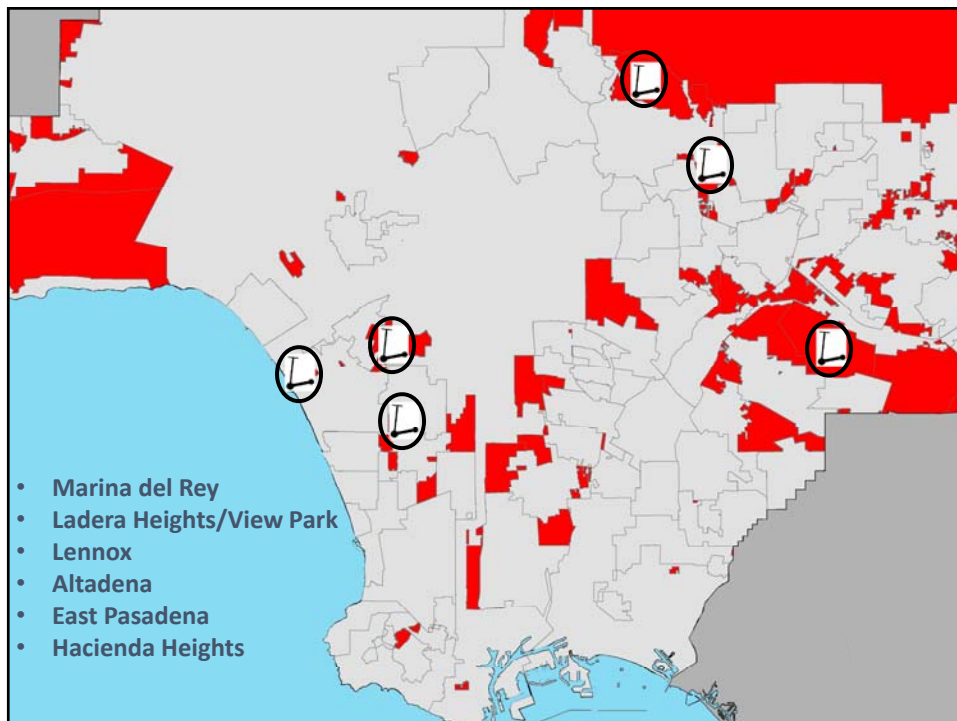




# Establishing E-Scooter and Bicycle Pilot Program

## Headlines

- [Culver City Kicks Off Trial Period as L.A. Responds to Electric Scooters](#) (7/2018)
- [El Segundo City Council Places Temporary Ban on Scooters in El Segundo](#) (8/2018)
- [Electric Scooters Roll into Long Beach](#) (8/2018)
- [Santa Monica, CA Kicks Off Shared Mobility Pilot Program](#) (9/2018)
- [Supervisors to Pick-up Debate on Beach Front Scooters](#) (10/2018)
- [Bird Sues City of Beverly Hills Over Motorized Scooter Ban](#) (11/2018)
- [Razor, Lime Deploy E-Scooters in LA](#) (12/2018)



- Marina del Rey
- Ladera Heights/View Park
- Lennox
- Altadena
- East Pasadena
- Hacienda Heights

# Establishing an E-Scooter and Bicycle Pilot Program

## Board Motions

- [October 16](#) – County Bike Path Guidance Document
  - County Counsel Memo (Oct 10)
  - 9 month Report Back (due July 16, 2019)
- [November 20](#) – Potential Regulations of E-Scooters and Bikes
  - 30 day Report Back ([Dec 20](#))
- [January 15](#) - Establishing E-Scooter and Bicycle Pilot Program
  - 45 day Status Report Back (due March 1, 2019)
  - Report on Pilot Progress (due Dec 31, 2019)

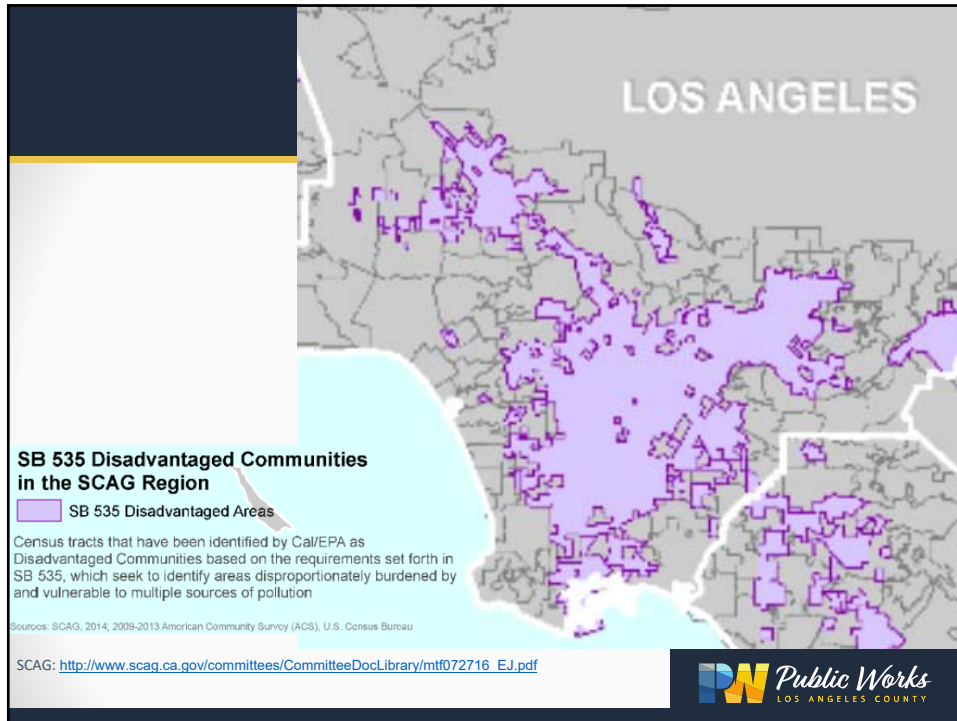
# Establishing an E-Scooter and Bicycle Pilot Program

## Key Guiding Principles

- Public Health and Safety
- Sustainability
- Equity
- Encouraging Innovation







## Establishing an E-Scooter and Bicycle Pilot Program

### Internal Coordination

- Public Works Divisions
  - 14 of 30 divisions
- County Departments
  - 8 of 34 departments
- County Counsel

# Establishing an E-Scooter and Bicycle Pilot Program

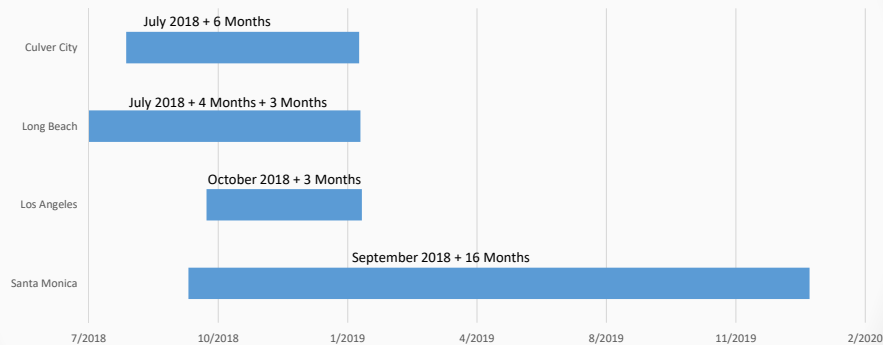
## Research

- NACTO: Guidelines for the Regulation and Management of Shared Active Transportation, Version 1: July 2018
- South Bay Cities COG: Draft Framework for a Shared Mobility (Bike and Scooter-Share) Program/Permit
- California Vehicle Code, County Code
- Conferences, webinars
- Media coverage of programs throughout country
- Existing Pilot Programs

# Establishing an E-Scooter and Bicycle Pilot Program

## Pilot Programs

Pilot Program Timeline



# Establishing an E-Scooter and Bicycle Pilot Program

## Lessons Learned

- Consumer protections
- Liability insurance
- Agency best practices
- Working with e-scooter operating companies
- Managing constituent calls
- Groundtruthing data
- Liability insurance
- Staffing requirements
- Need data scientists to analyze the data

# Establishing an E-Scooter and Bicycle Pilot Program

## Decision Points

- Establishing process and responsibilities
- Pilot program area, inc restricted use areas
- Number of operators, devices
- Pricing structure
- Insurance requirements
- Anticipating resource needs
- Ordinance language



# Establishing an E-Scooter and Bicycle Pilot Program

## Next Steps

- Ordinance language development and adoption
- Fund management and oversight
- Data management and oversight
- Pre-application meeting for vendors
- Internal coordination – roles and responsibilities
- External coordination – neighboring cities, Metro
- Public outreach
- Address resource needs
- Continue to track innovation
- Adjust and address



**Thank you!**

**Elaine Kunitake**

[ekunitake@dpw.lacounty.gov](mailto:ekunitake@dpw.lacounty.gov)

(626) 458-3922

