



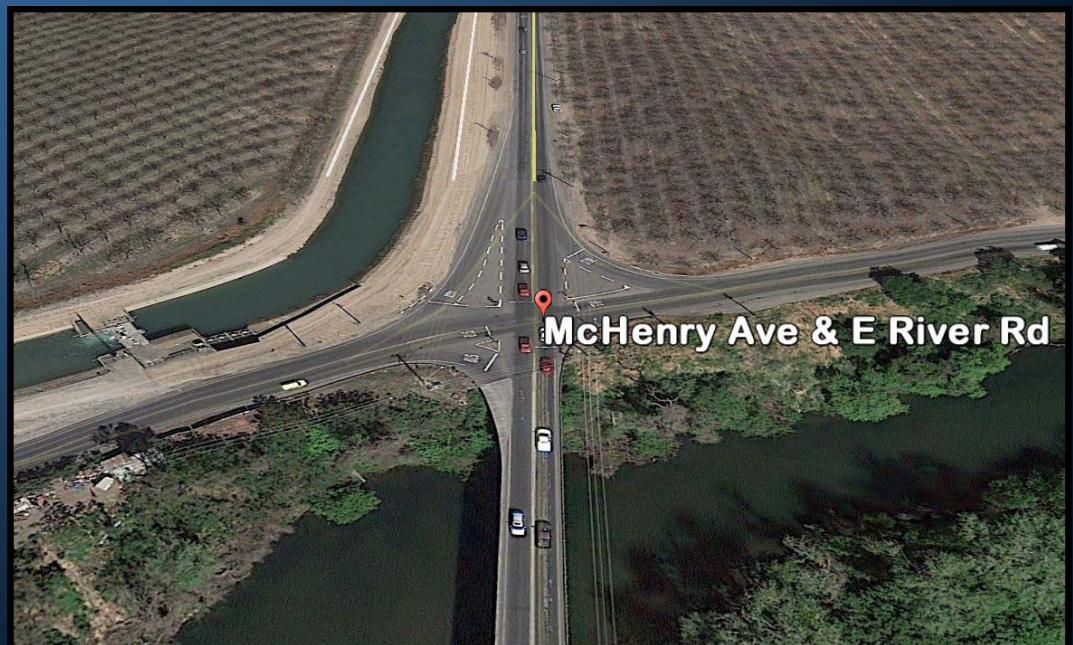
# McHenry Ave/River Rd Temporary Roundabout

*March 2018*

*Presented by:  
Kris Balaji  
San Joaquin County  
Public Works Department*



## Location With Prior All-Way STOP Control

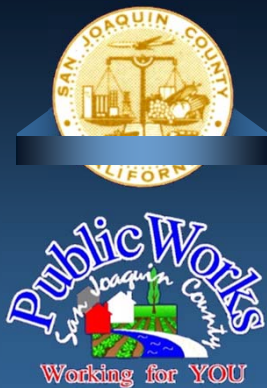


**McHenry Ave & E River Rd**



- Intersection ADT = 15,000
- Prior AWSC Peak Hour LOS = F
  - Peak Hour Delays up to 20 mins
- Temp Roundabout Peak LOS = B
- Cost to construct = ~\$70,000
  - 1 Day Closure to Construct

## Interim Solution – Temp Roundabout



# Public Outreach



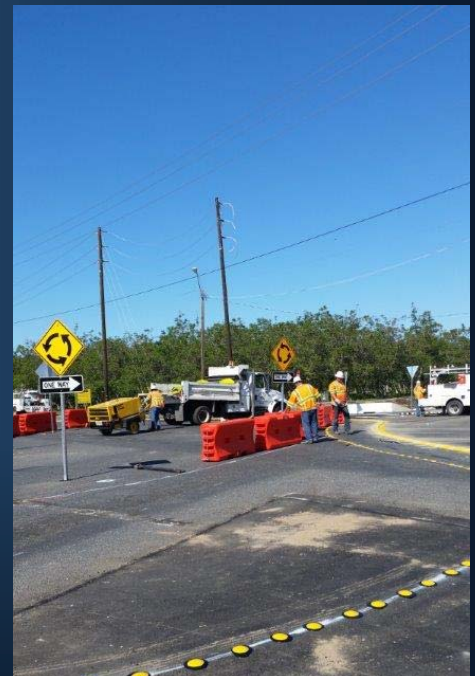
# Public Outreach

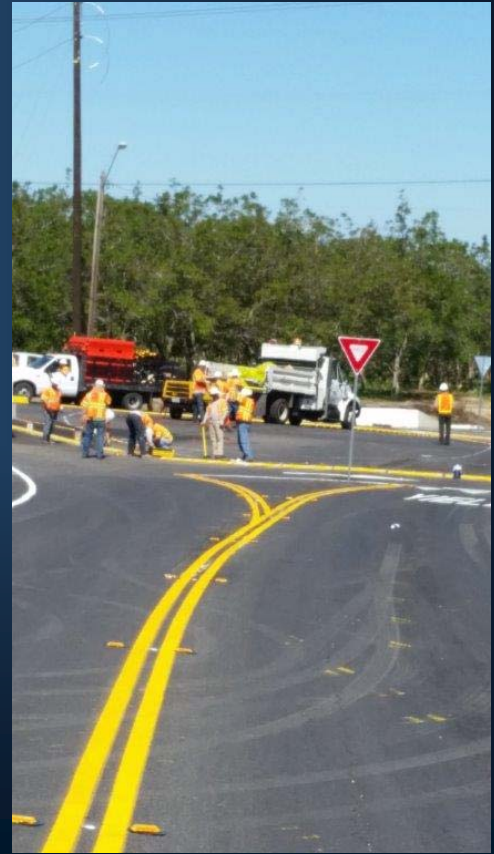


# Construction



# Construction





# Temporary Roundabout

