



League of California Cities  
2015 Annual Conference

September 30, 2015

## MCAS El Toro to Orange County Great Park *Timeline* →



- 1999: MCAS El Toro closes
- 2002: Measure W ends plans for airport
- 2004: Irvine completes annexation
- 2005: US Navy auctions to private bidders
- 2005: Heritage Fields El Toro purchases former base for \$650M
- 2005: Heritage Fields El Toro transfers land to City for Orange County Great Park
- 2007: Great Park Balloon launched; Master Plan approved
- 2009: Western Sector Park Development Plan approved



CITY OF IRVINE

## MCAS El Toro incorporated into City of Irvine

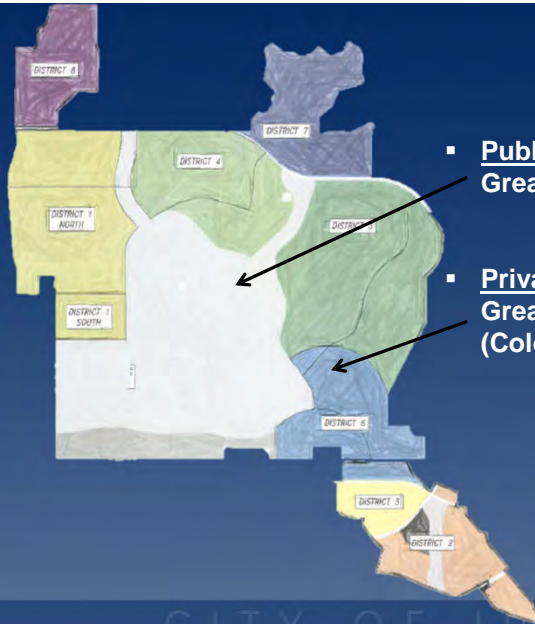


- Largest Planning Area in the City
- Includes both **private** Heritage Fields Great Park Neighborhoods and **public** Orange County Great Park



CITY OF IRVINE

## Public Park – Private Development



- **Public Property:** Orange County Great Park (White Area)
- **Private Property:** Heritage Fields Great Park Neighborhoods (Colored Areas)



CITY OF IRVINE

## Great Park Vision

- Honor the Spirit and Heritage of the Land
- Promote Health and Wellness
- Enhance Quality of Life



CITY OF IRVINE



## Orange County Great Park Post-Redevelopment *Timeline* →

- 2011
  - State eliminates Redevelopment
  - Eliminated funding: \$1.4 billion tax increment over 40 years
- 2013
  - Agreement between City of Irvine and Heritage Fields El Toro, LLC for design and construction of 688 acres of Great Park improvements
- 2014
  - Approval of Master Plan modifications for 688 acre plan
  - Demolition for phase I of 688 acre plan
- 2015
  - Ongoing construction of 688 acre plan and infrastructure
- 2016
  - Completion of first phases of 688 acre plan

CITY OF IRVINE



## Public – Private Partnership: Park Construction

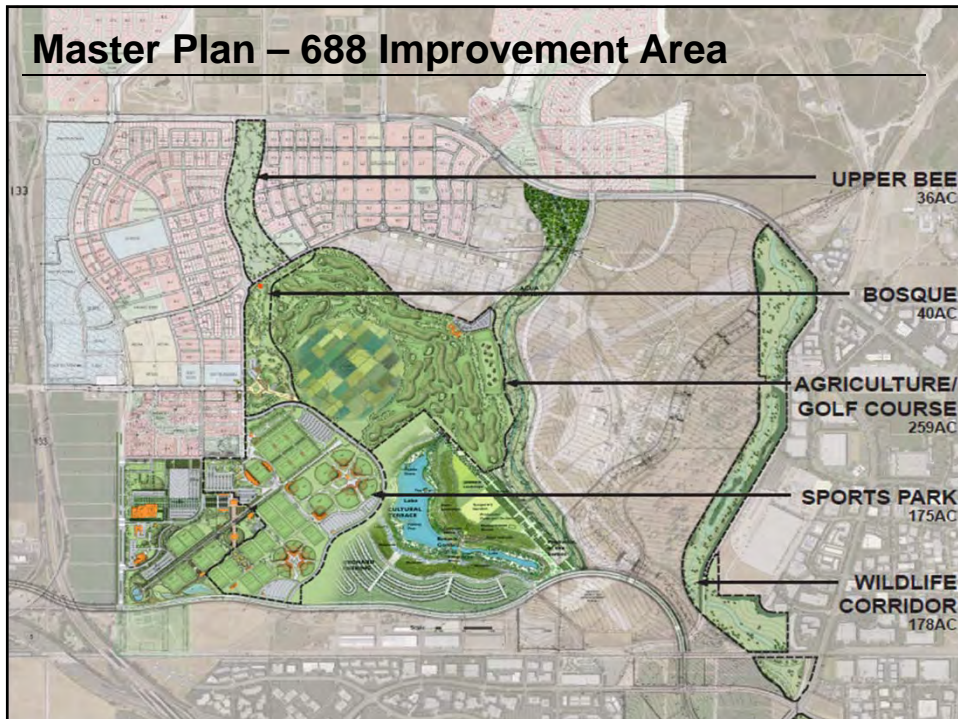


- Heritage Fields to improve approximately 688 acres of the Orange County Great Park
- 5 year delivery schedule
- \$215M in public benefit park improvements
  - 175-acre Sports Park
  - 40-acre Bosque
  - 36-acre Upper Bee connection to Irvine Blvd.
  - 18-hole Great Park Golf Course
  - Wildlife Corridor



CITY OF IRVINE

## Master Plan – 688 Improvement Area



## Sports Park

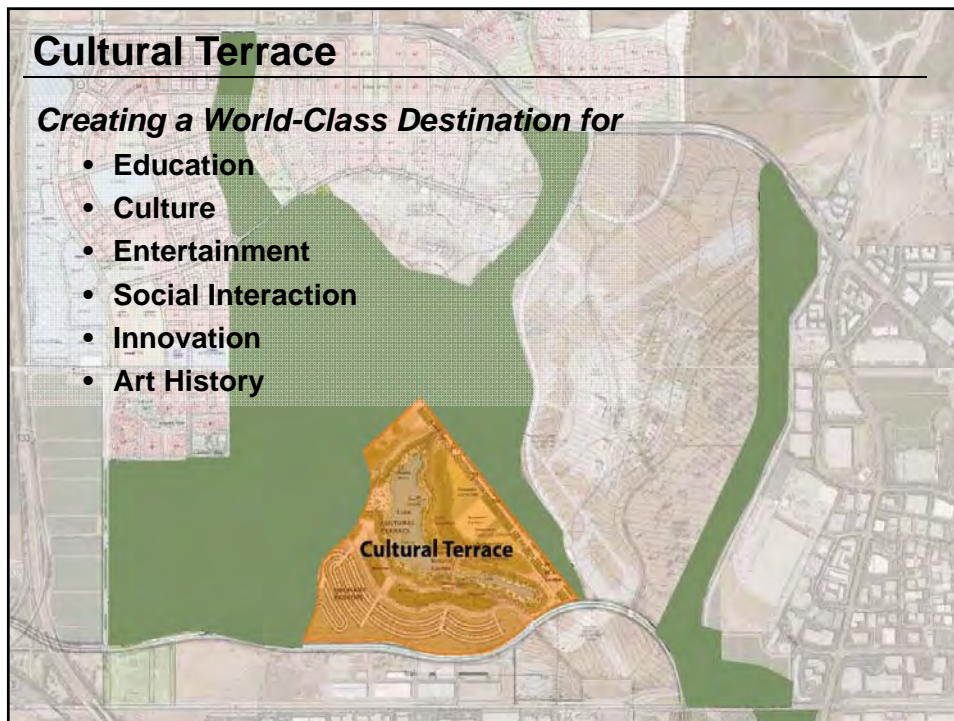
- 12 baseball & softball fields
- Baseball & softball stadiums
- 13 soccer fields
- 2,500 seat soccer stadium
- 25 tennis courts
- Flex field event space
- Children's play areas



## Cultural Terrace

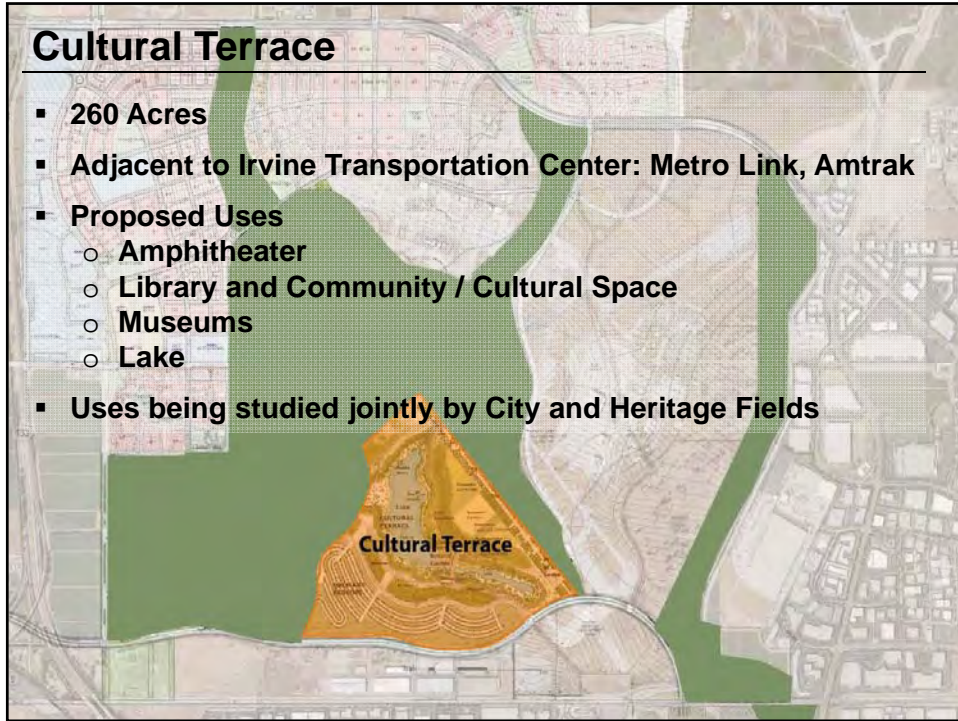
*Creating a World-Class Destination for*

- Education
- Culture
- Entertainment
- Social Interaction
- Innovation
- Art History



## Cultural Terrace

- 260 Acres
- Adjacent to Irvine Transportation Center: Metro Link, Amtrak
- Proposed Uses
  - Amphitheater
  - Library and Community / Cultural Space
  - Museums
  - Lake
- Uses being studied jointly by City and Heritage Fields



## Runway Demolition



## Great Park Construction



## Reflecting Ponds and Viewing Pier Water Conservation Features



## Great Park Today



Palm Court Arts Complex



Historic Hangar 244



Balloon & Carousel



Walkable Historical Timeline



Kids Rock Playground



North Lawn



Farm + Food Lab



Great Park Gallery & Artists Studios



The Giving Grove



## Private Partner- Heritage Fields Great Park Neighborhoods Residential Communities





## Private Partner- Heritage Fields Broadcom Corporation Campus

- 2,000,000 square foot research and development campus



CITY OF IRVINE

## Private Partner- Heritage Fields Broadcom Corporation Campus

- 2,000,000 square foot research and development campus



CITY OF IRVINE

## US Dept. of Energy - Solar Decathlon 2015



- October 8–11, 15–18 2015
- 14 International Collegiate Teams
- 70,000 spectators
- Striving for Sustainable Design



CITY OF IRVINE



League of California Cities  
2015 Annual Conference

September 30, 2015