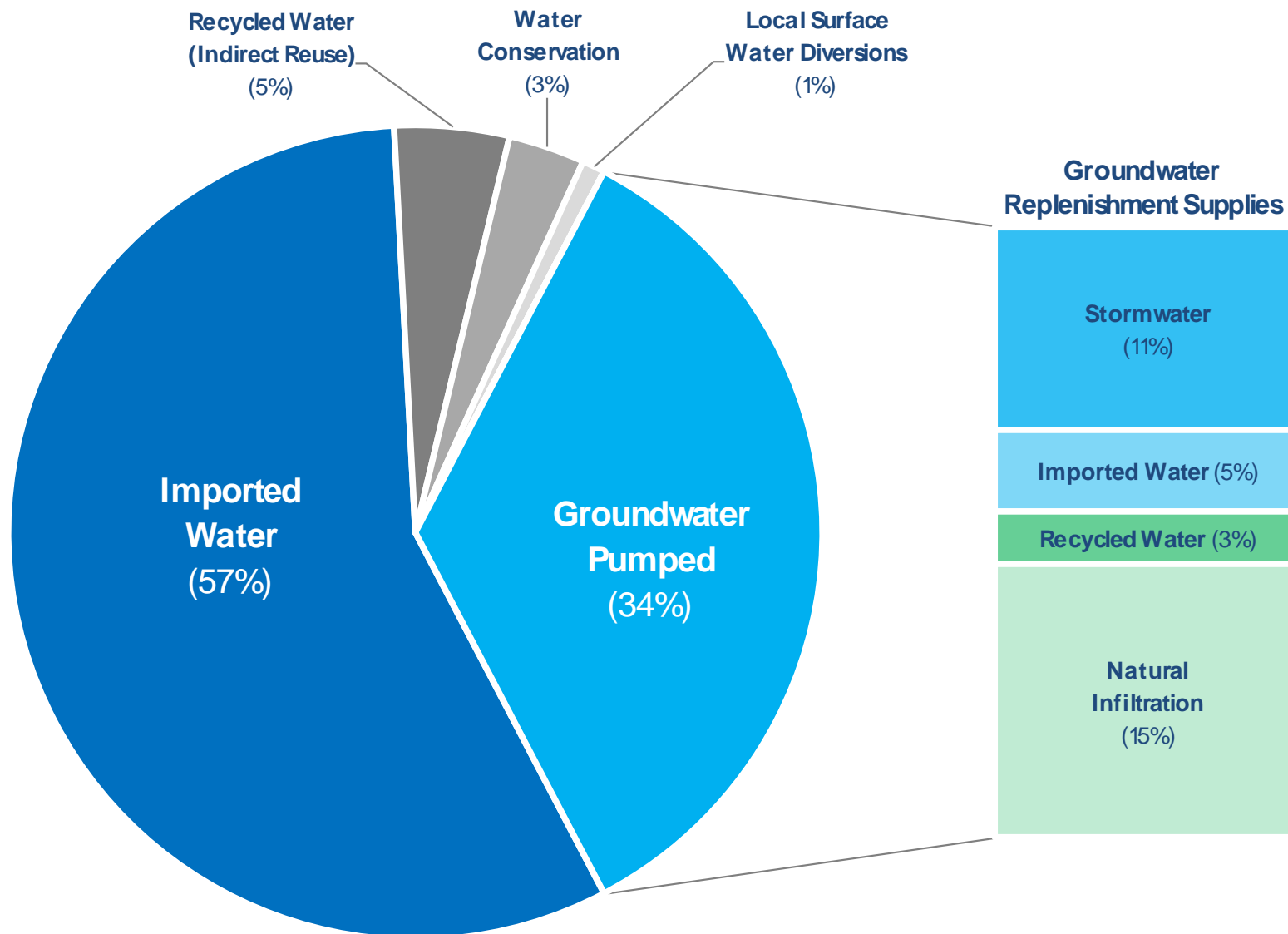




SAFE  
CLEAN  
WATER  
L.A. COUNTY



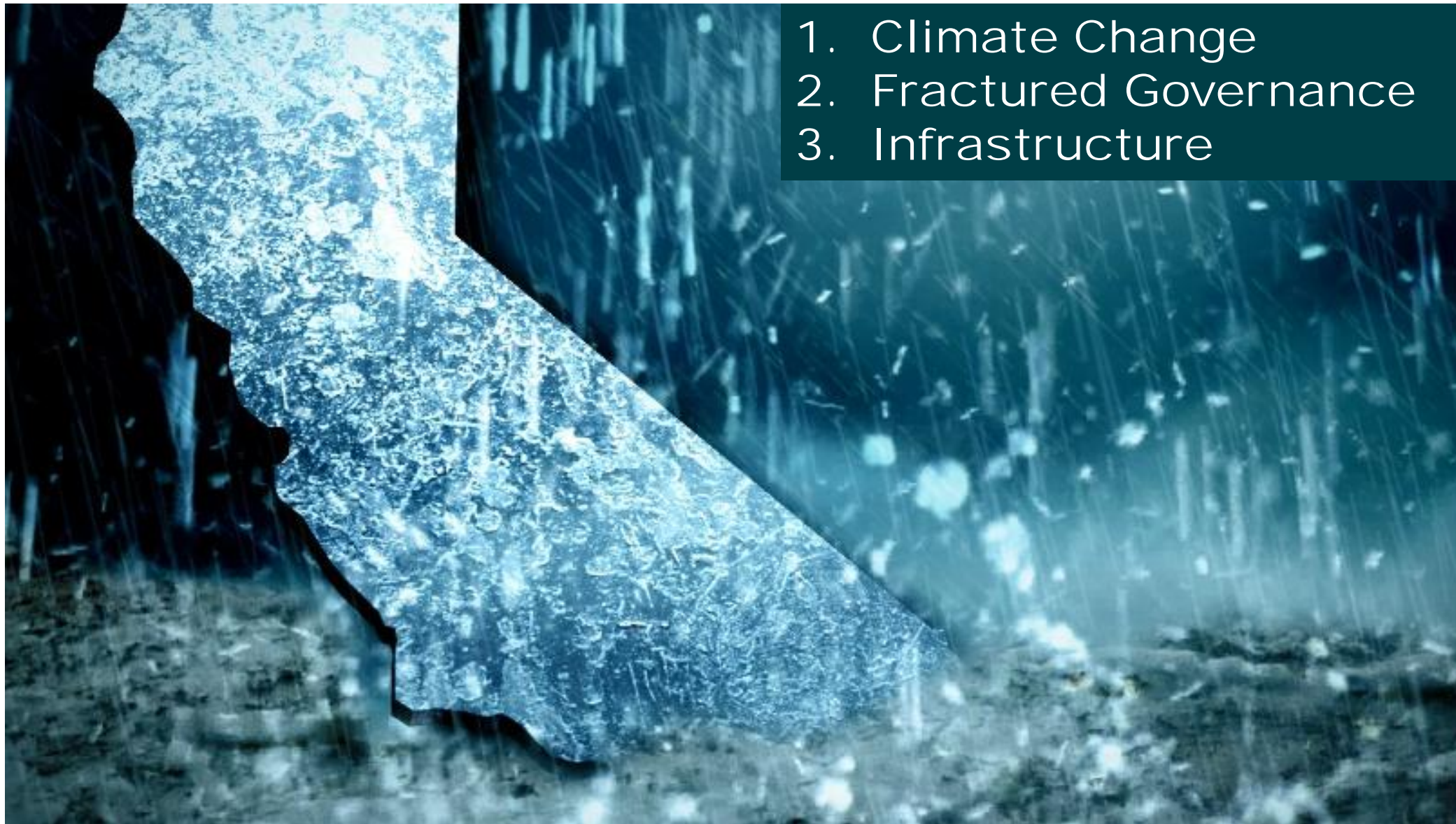
# Water Portfolio





# Challenges

1. Climate Change
2. Fractured Governance
3. Infrastructure





# Program Development

## **May 2017 – Board Motion**

- Develop a multi-benefit stormwater program that:
  - ✓ Improves water quality
  - ✓ Increases local water supply
  - ✓ Provides tangible community enhancements

## **AB 1180 (Holden)**

- Municipal - 40%
- Regional - 50%
- FCD - 10%

## **Projected estimate of \$300 million annually**

- Municipal - \$120 million
- Regional - \$150 million
- FCD - \$30 million



# Municipal Program

## Funding

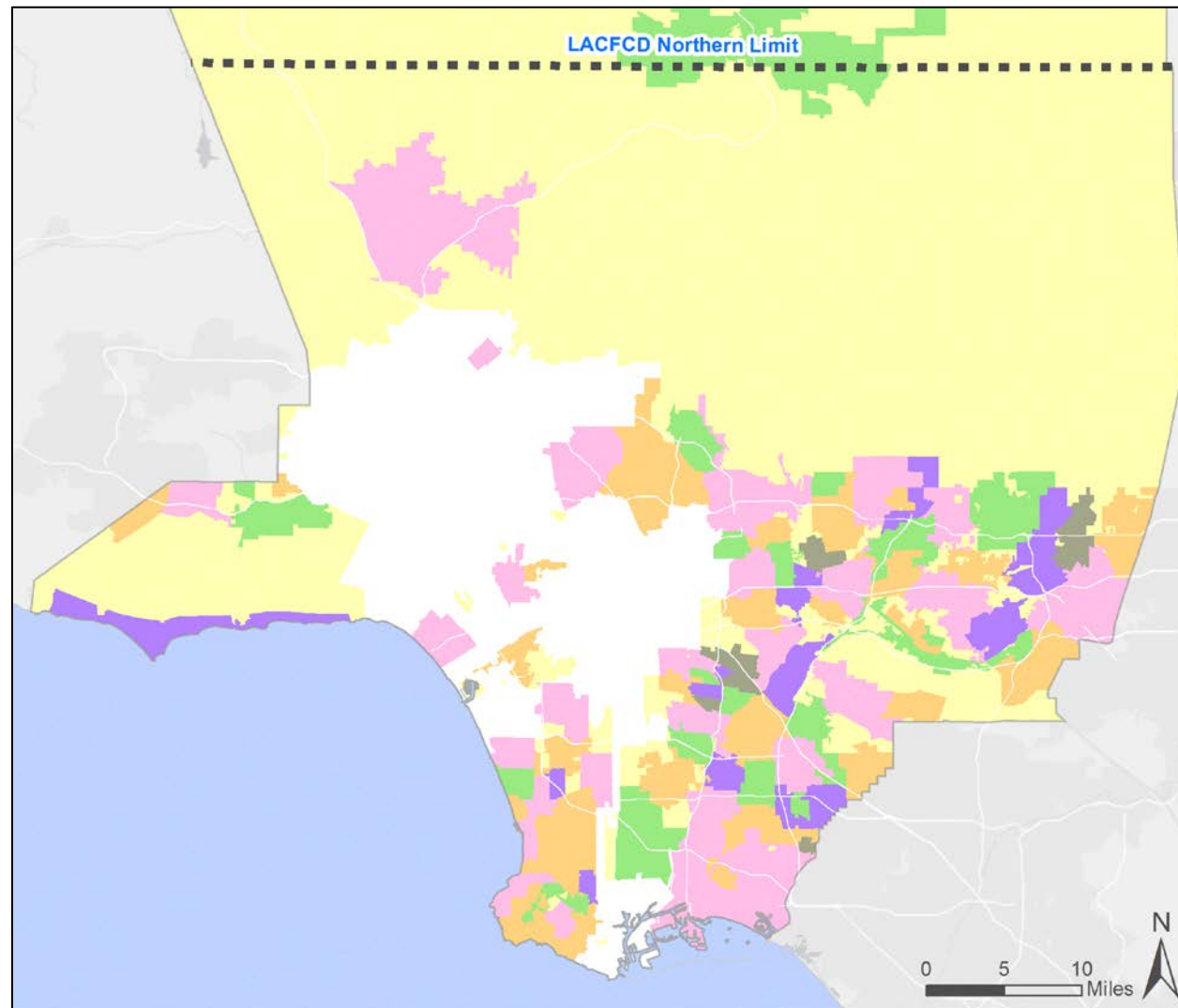
- 40% - \$120M
- Local control
- Maximize the ability of local governments to address local issues

## Projects and Activities

- Water Quality Benefit required; Multi-benefit projects encouraged.

## Maintenance of Effort

- Up to 30% of funds available for baseline activities.





# Regional Program - Watershed Based

## Funding

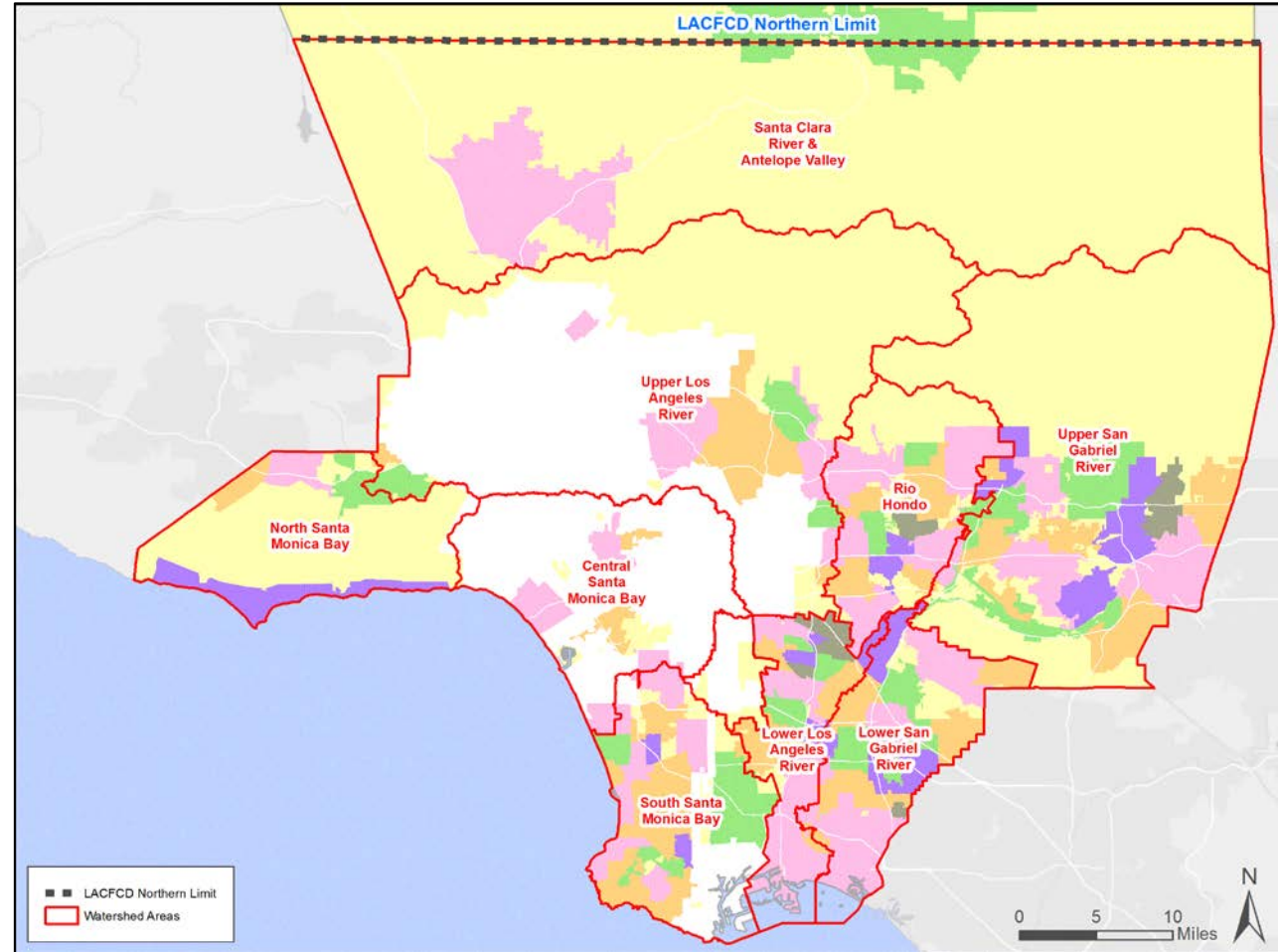
- 50% - \$150M
- Watershed-based

## Project applicants

- Any entity with a completed feasibility study

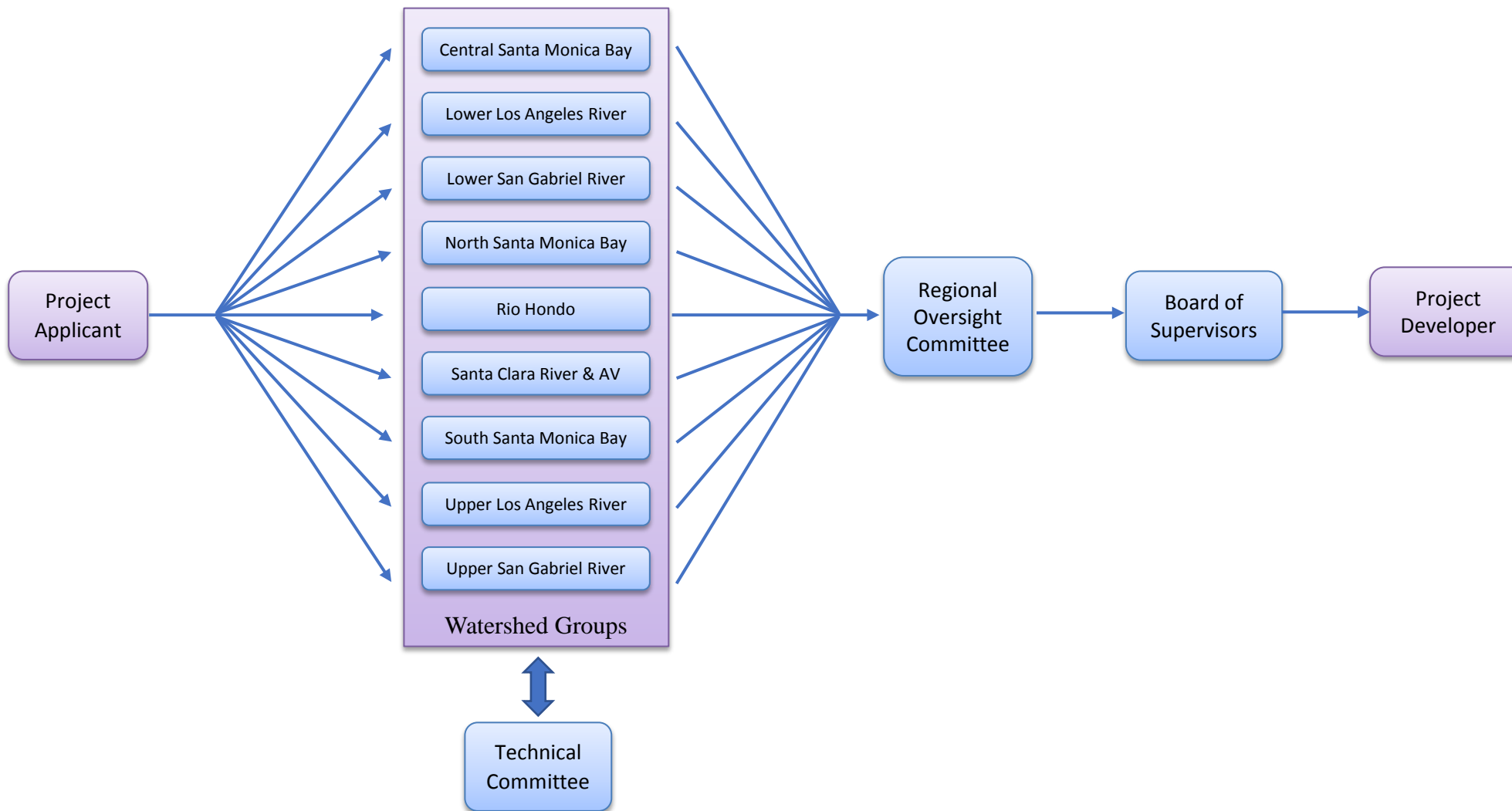
## Projects and Activities

- Water Quality Benefit and;
  - ✓ Water supply benefit and/or
  - ✓ Community investment
- Design, construction, land acquisition, O&M, programs, and other eligible activities





# Regional Program Process





# Watershed Group

- Central Santa Monica Bay
- Lower Los Angeles River
- Lower San Gabriel River
- North Santa Monica Bay
- Rio Hondo
- Santa Clara River & AV
- South Santa Monica Bay
- Upper Los Angeles River
- Upper San Gabriel River

	Sector	Member
1	Municipality *	Varies for each Watershed Area
2	Municipality* / Other Self-Selected	Varies for each Watershed Area
3	Municipality* / Other Self-Selected	Varies for each Watershed Area
4	Municipality / Other Self-Selected	Varies for each Watershed Area
5	Municipality / Other Self-Selected	Varies for each Watershed Area
6	Municipality / Other Self-Selected	Varies for each Watershed Area
1	LACFCD	Appointed by Board of Supervisors
2	Largest Service Provider-Water Agency	Appointed by Board of Supervisors
3	Largest Service Provider-Ground Water/Water Agency 2	Appointed by Board of Supervisors
4	Largest Service Provider- Sanitation	Appointed by Board of Supervisors
5	Largest Municipality Agency-Open Space/Recreation	Appointed by Board of Supervisors
1	Community Stakeholder	Watershed Area Steering Committee recommended, then Board of Supervisor approved
2	Community Stakeholder	Watershed Area Steering Committee recommended, then Board of Supervisor approved
3	Community Stakeholder	Watershed Area Steering Committee recommended, then Board of Supervisor approved
4	Community Stakeholder	Watershed Area Steering Committee recommended, then Board of Supervisor approved

Membership based on Percent Land Area

Membership Breakdown	
Municipality	6
Sector-Specific	5
Community Stakeholders	4

\*A Municipality may occupy up to three (3) seats within a Watershed Group. Three or more seats are self-selected by the remaining cities.

\*\*Community Stakeholder seats may include persons from sectors: Business, Public Health, Non-Governmental Organizations, Disadvantaged Communities, and Community Based Organizations





# Watershed Group Membership

	Central Santa Monica Bay	Lower Los Angeles River	Lower San Gabriel River	North Santa Monica Bay	Rio-Hondo	Santa Clara River & Antelope Valley	South Santa Monica Bay	Upper Los Angeles River	Upper San Gabriel River	
Municipal Representation (6 seats)									Unincorporated 22% 1	
		Long Beach 24% 1					Torrance 16% 1		Pomona 11%	
		Compton 12%					Los Angeles 16% 1		West Covina 9%	
		Commerce 10%	Long Beach 16% 1			Pasadena 15%	Carson 14%		Diamond Bar 7%	
		South Gate 9%	Whittier 11%			Unincorporated 14%	Unincorporated 9%		Industry 7%	
		Vernon 8%	Santa Fe Springs 9%			Arcadia 12%	Rancho Palos Verdes 8%		Glendora 7%	
		Downey 7%	Unincorporated 8%			Montebello 8%	Inglewood 5%		Claremont 5%	
		Lynwood 6%	Lakewood 8%			El Monte 8%	Gardena 5%	Los Angeles 70% 3	San Dimas 5%	
		Huntington Park 4%	Norwalk 8%			Monterey Park 7%	Redondo Beach 5%	Unincorporated 11%	Walnut 4%	
		Paramount 4%	Cerritos 7%			Monrovia 6%	Hawthorne 5%	Glendale 6%	Covina 4%	
		Unincorporated 4%	La Mirada 7%			Rosemead 6%	Rolling Hills 3%	Burbank 4%	Baldwin Park 4%	
	Los Angeles 79% 3	Bell Gardens 3%	Downey 6%			Alhambra 5%	Manhattan Beach 3%	La Canada Flintridge 2%	La Verne 4%	
	Santa Monica 5%	Bell 3%	Bellflower 6%	Unincorporated 55% 3		Temple City 5%	Palos Verdes Estates 3%	Pasadena 2%	Azusa 4%	
	Beverly Hills 4%	Pico Rivera 2%	Pico Rivera 5%	Malibu 24% 1		San Gabriel 5%	Rolling Hills Estates 2%	Calabasas 1%	Irwindale 2%	
	Culver City 3%	Maywood 2%	La Habra Heights 5%	Agoura Hills 10%		San Marino 4%	El Segundo 2%	South Pasadena 1%	La Puente 2%	
	El Segundo 3%	Cudahy 2%	Paramount 1%	Westlake Village 7%		South El Monte 3%	Lomita 2%	Alhambra 1%	Duarte 2%	
	Unincorporated 2%	Signal Hill 1%	Artesia 1%	Calabasas 4%		Sierra Madre 3%	Lawndale 1%	San Fernando 1%	El Monte 1%	
	Inglewood 2%	Carson 0%	Hawaiian Gardens 1%	Hidden Hills 0%		Irwindale 1%	Hermosa Beach 1%	Hidden Hills 1%	Bradbury 1%	
	West Hollywood 1%	Lakewood 0%	Signal Hill 1%	Los Angeles 0%		South Pasadena 0%	Palmdale 3%	Compton 1%	Monterey Park 0%	South El Monte 0%
	Non-represented City (Self Selected) 3	Non-represented City (Self Selected) 5	Non-represented City (Self Selected) 5	Non-represented City (Self Selected) 2	Non-represented City (Self Selected) 6			Non-represented City (Self Selected) 4	Non-represented City (Self Selected) 3	Non-represented City (Self Selected) 5
LACFC	FCD	FCD	FCD	FCD	FCD	FCD	FCD	FCD	FCD	
Water Agency	LADWP	Central Basin	Central Basin	Las Virgines	Upper San Gabriel District	Castaic Lake	West Basin	LA-DWP	Upper San Gabriel District	
Ground Water / Water Agency 2	West Basin	Water Replenishment District	Water Replenishment District	County-Waterworks District	Main San Gabriel Basin	GSA for the Santa Clara River Valley	Water Replenishment District	LA-DWP	Main San Gabriel Basin	
Sanitation	LA-SAN	San Districts	San Districts	Las Virgines	San Districts	San Districts	San Districts	LA-SAN	San Districts	
Open Space	LA Rec & Parks	City of Long Beach Parks and Recreation	City of Long Beach Parks and Recreation	Mountains Recreation and Conservation Authority	City of Pasadena Parks and Recreation	City of Santa Clarita Parks and Recreation	LA Rec & Parks	LA Rec & Parks	County Parks and Rec	
Community Stakeholder	Selected by Steering Committee; Approved by BoS	Selected by Steering Committee; Approved by BoS	Selected by Steering Committee; Approved by BoS	Selected by Steering Committee; Approved by BoS	Selected by Watershed Group; Approved by BoS	Selected by Steering Committee; Approved by BoS	Selected by Steering Committee; Approved by BoS	Selected by Steering Committee; Approved by BoS	Selected by Steering Committee; Approved by BoS	
Community Stakeholder	Selected by Steering Committee; Approved by BoS	Selected by Steering Committee; Approved by BoS	Selected by Steering Committee; Approved by BoS	Selected by Steering Committee; Approved by BoS	Selected by Watershed Group; Approved by BoS	Selected by Steering Committee; Approved by BoS	Selected by Steering Committee; Approved by BoS	Selected by Steering Committee; Approved by BoS	Selected by Steering Committee; Approved by BoS	
Community Stakeholder	Selected by Steering Committee; Approved by BoS	Selected by Steering Committee; Approved by BoS	Selected by Steering Committee; Approved by BoS	Selected by Steering Committee; Approved by BoS	Selected by Watershed Group; Approved by BoS	Selected by Steering Committee; Approved by BoS	Selected by Steering Committee; Approved by BoS	Selected by Steering Committee; Approved by BoS	Selected by Steering Committee; Approved by BoS	
Community Stakeholder	Selected by Steering Committee; Approved by BoS	Selected by Steering Committee; Approved by BoS	Selected by Steering Committee; Approved by BoS	Selected by Steering Committee; Approved by BoS	Selected by Watershed Group; Approved by BoS	Selected by Steering Committee; Approved by BoS	Selected by Steering Committee; Approved by BoS	Selected by Steering Committee; Approved by BoS	Selected by Steering Committee; Approved by BoS	

Six membership seats determined by land area in the Watershed area (100% Watershed land area ÷ 6 seats = ~16%)



# Regional Oversight Committee

	Member	Appointed By
1	Central Santa Monica Bay	Steering Committee
2	Lower Los Angeles River	Steering Committee
3	Lower San Gabriel River	Steering Committee
4	North Santa Monica Bay	Steering Committee
5	Rio Hondo	Steering Committee
6	Santa Clara River & Antelope Valley	Steering Committee
7	South Santa Monica Bay	Steering Committee
8	Upper Los Angeles River	Steering Committee
9	Upper San Gabriel River	Steering Committee
1	LACFCD	Appointed by Board of Supervisors
2	Water Agency	Appointed by Board of Supervisors
3	Groundwater	Appointed by Board of Supervisors
4	Sanitation	Appointed by Board of Supervisors
5	Open Space/Recreation	Appointed by Board of Supervisors
6	Community Stakeholder	Appointed by Board of Supervisors
7	Community Stakeholder	Appointed by Board of Supervisors
8	Community Stakeholder	Appointed by Board of Supervisors
9	Community Stakeholder	Appointed by Board of Supervisors

\*\* Community Stakeholder seats may include persons from sectors: Business, Public Health, Non-Governmental Organizations, Disadvantaged Communities, and Community Based Organizations

Selection is made with an eye toward keeping the ROC geographically balanced with a nexus to stormwater



# Regional Program Project Criteria

Water Quality	Section A: Water Quality Benefit	40 POINTS
Water Supply	Section B: Water Supply Benefit	25 POINTS
Community Investment	Section C: Community Investment Benefit	25 POINTS
Leveraging Funds	Section D: Leveraging Funds	10 POINTS



# Project Examples





# FCD Program

## **Funding**

- 10% - \$30M

## **Stormwater Education Program**

- Schools education and curriculum program
- Public education programs
- No less than \$20 million over 5 years

## **Watershed coordinators**

- Resources, workshops, networking

## **Local workforce job training**

- Vocational training and certification

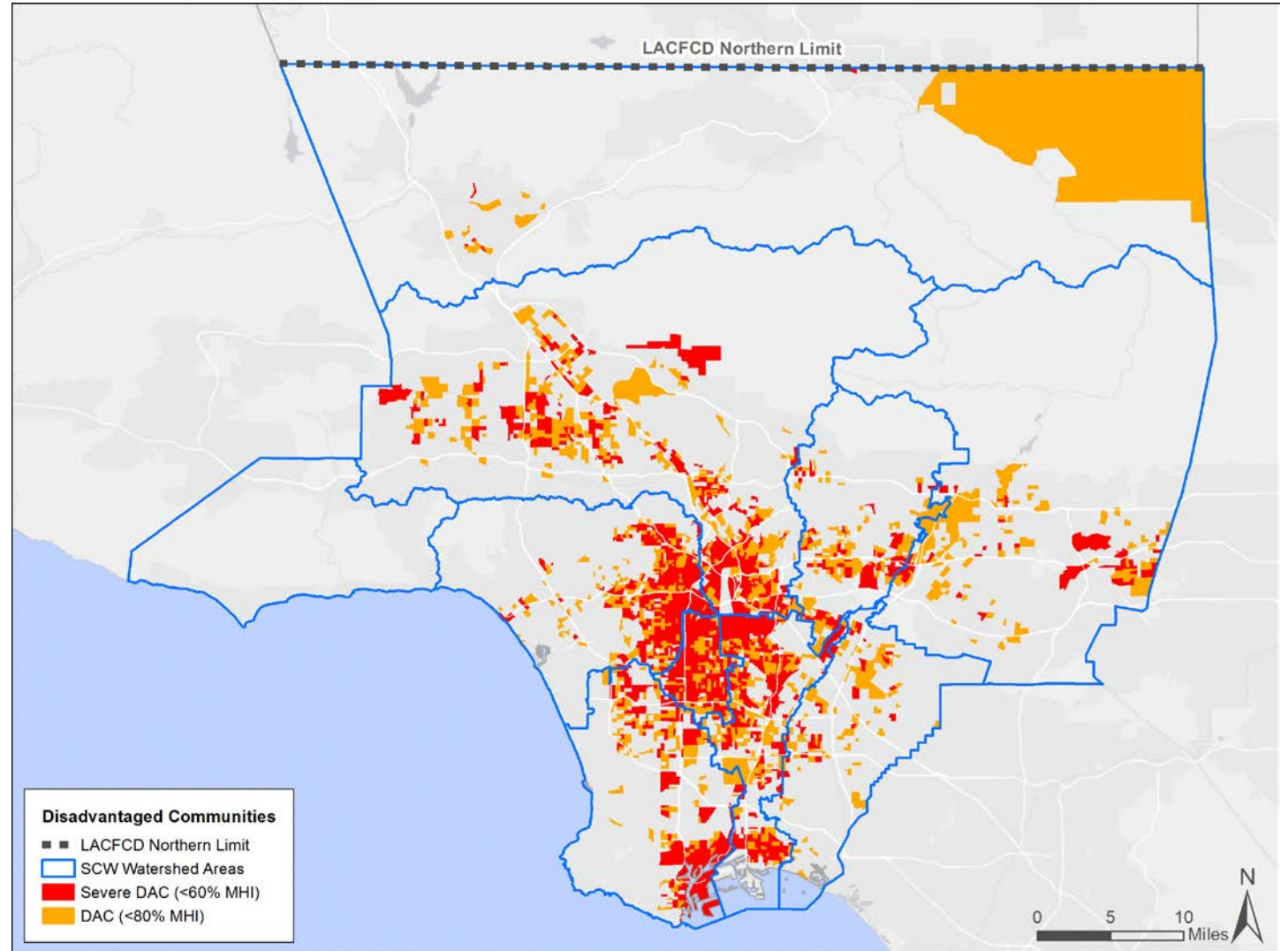


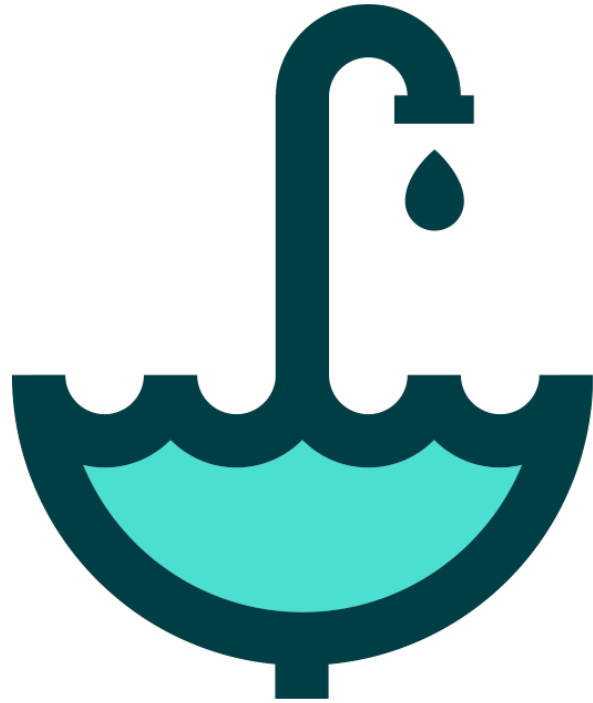


# Disadvantaged Communities (DACs)

**41% of Region**  
**110% return to DACs**

Watershed Area	\$100
DAC Pop. Watershed	40%
Revenue to DAC	110%
Dollars returned	$\$40 + \$4 = \$44$





SAFE  
CLEAN  
WATER  
L.A. COUNTY

[www safecleanwaterlacounty.org](http://www safecleanwaterlacounty.org)